

— **761** Let's get started... —



M O O N

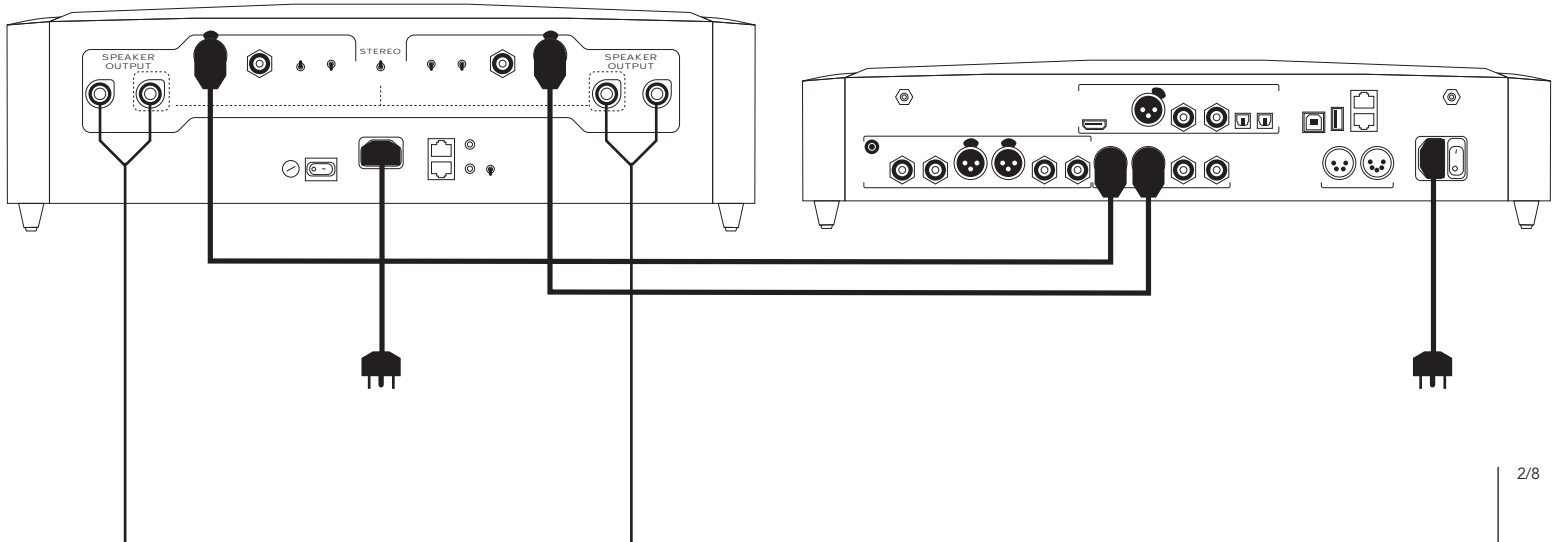
by SIMAUDIO

1 Connecting – Stereo

Connect the preamp to the corresponding INPUT connectors.

Connect the SPEAKER OUTPUT to the loudspeaker terminals (positive [+] to red and negative [-] to black).

Toggle the STEREO/MONO switch to STEREO, and skip to Step 2.

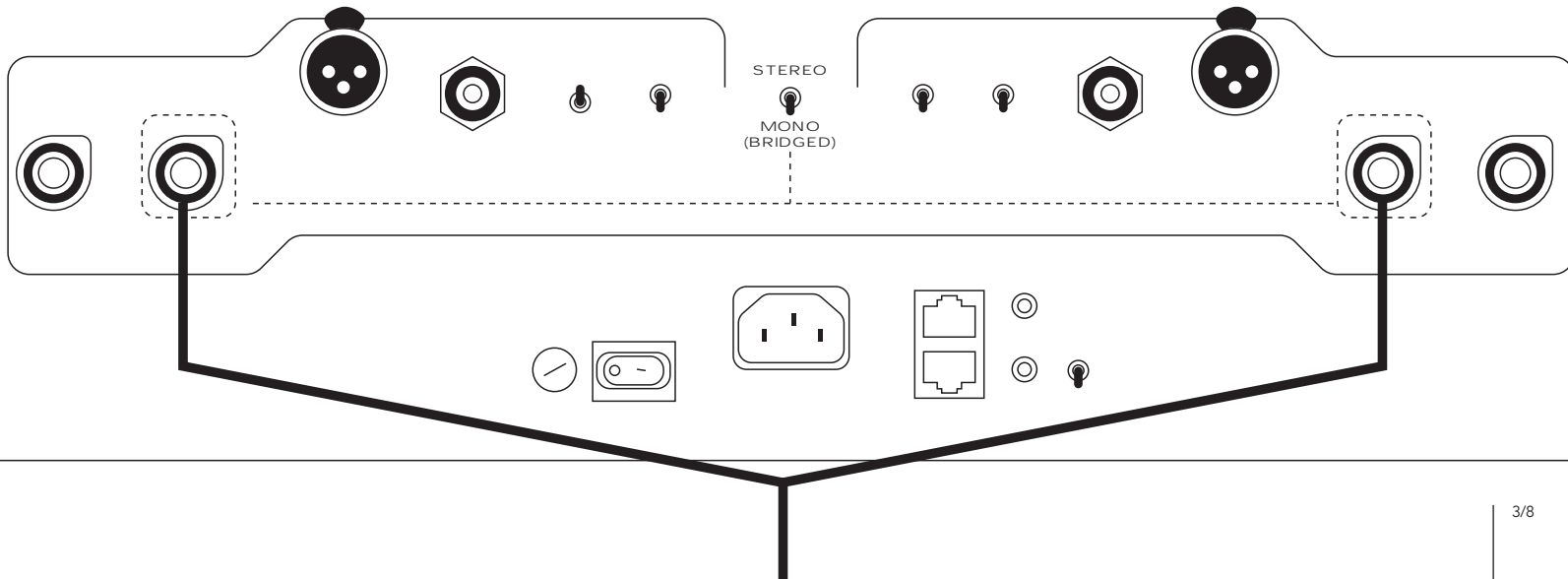


1 Connecting – Mono

Connect the preamp to the LEFT CHANNEL input.

Connect the positive [+] LEFT CHANNEL binding post to the positive loudspeaker terminal, and connect the positive [+] RIGHT CHANNEL binding post to the negative loudspeaker terminal.

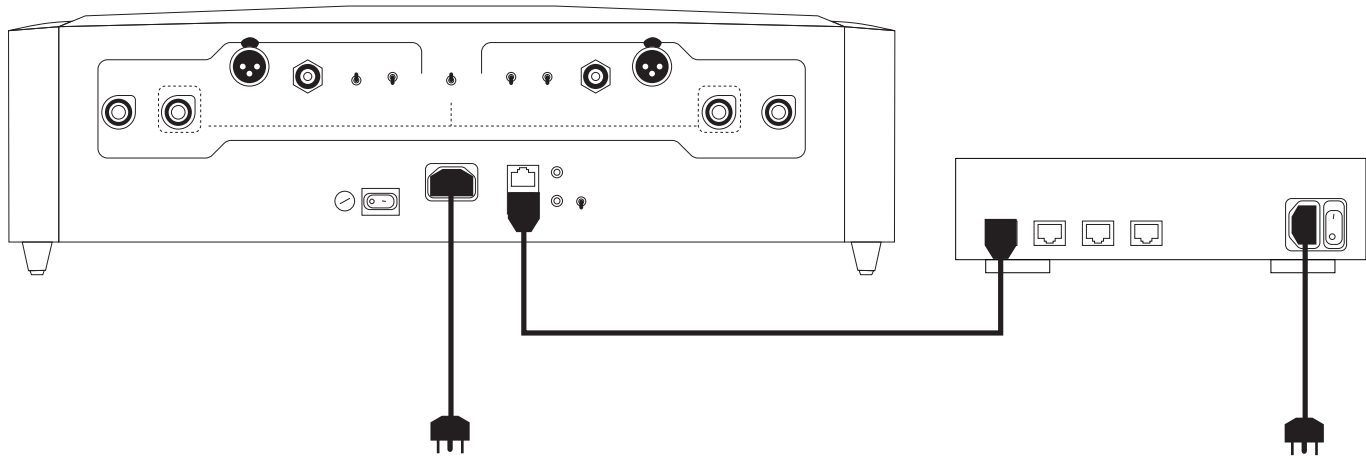
Toggle the STEREO/MONO switch to MONO.



2 | Connecting – Power & Network

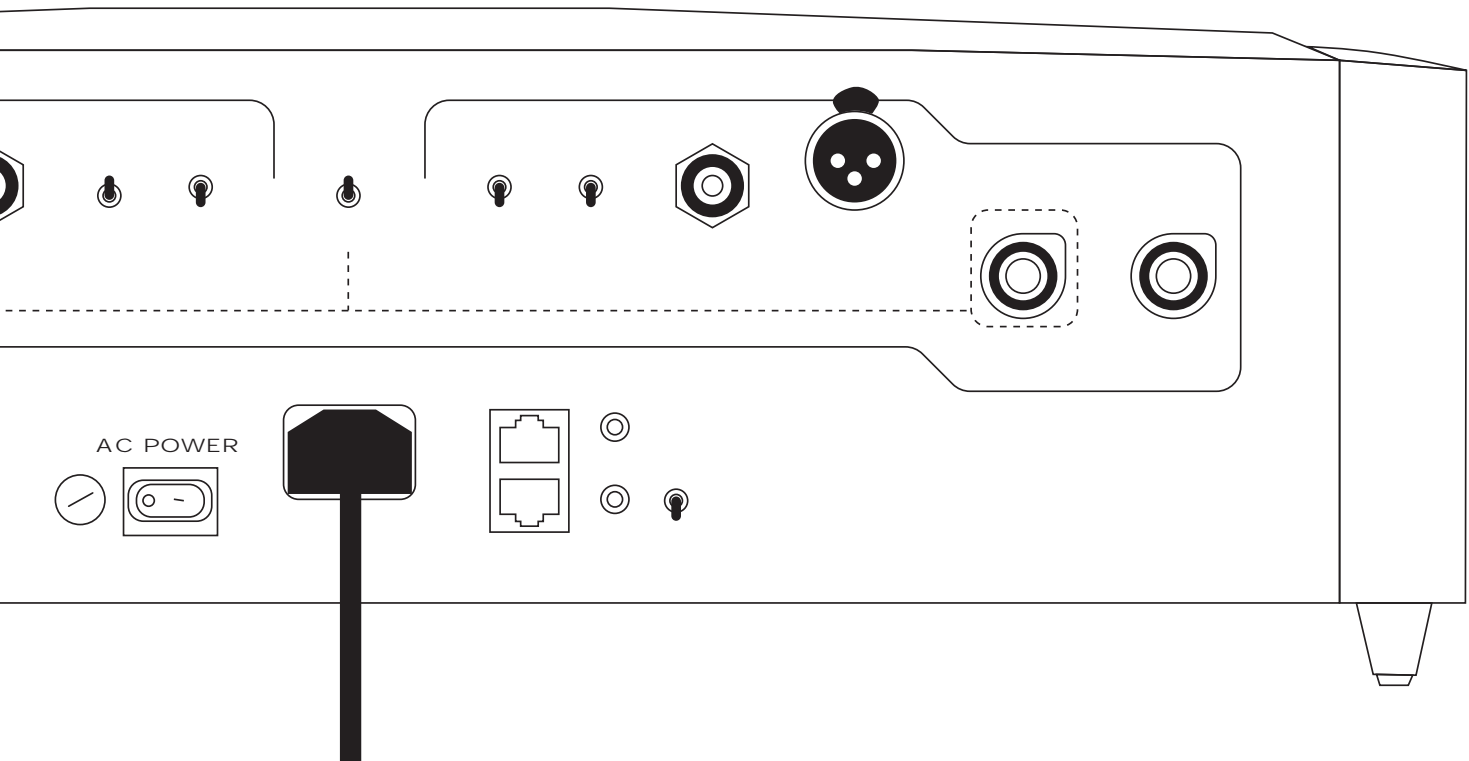
Connect the supplied power cable between the IEC connector and an electrical outlet.

For use with MOONLink (optional), connect the two devices with the Ethernet cable, or connect the cable to a network router.



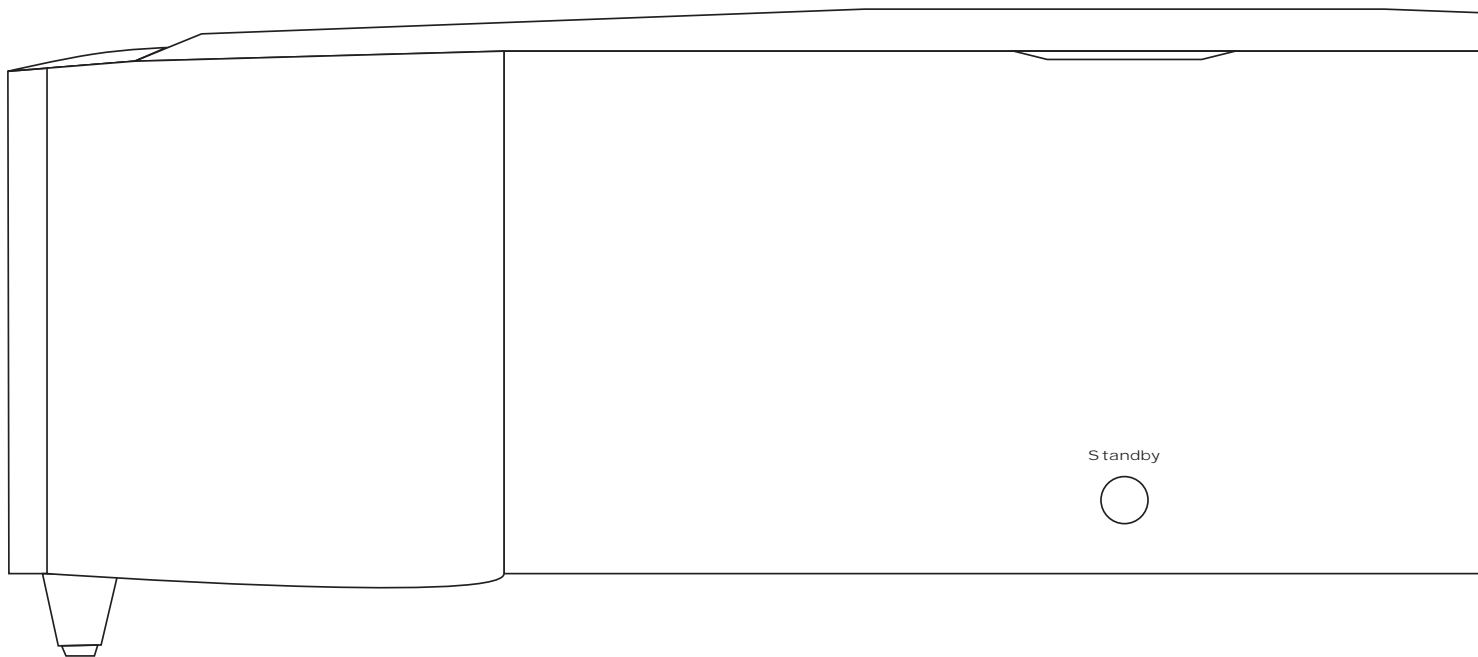
3 Starting – Power

Toggle the AC POWER rocker switch to On [I].



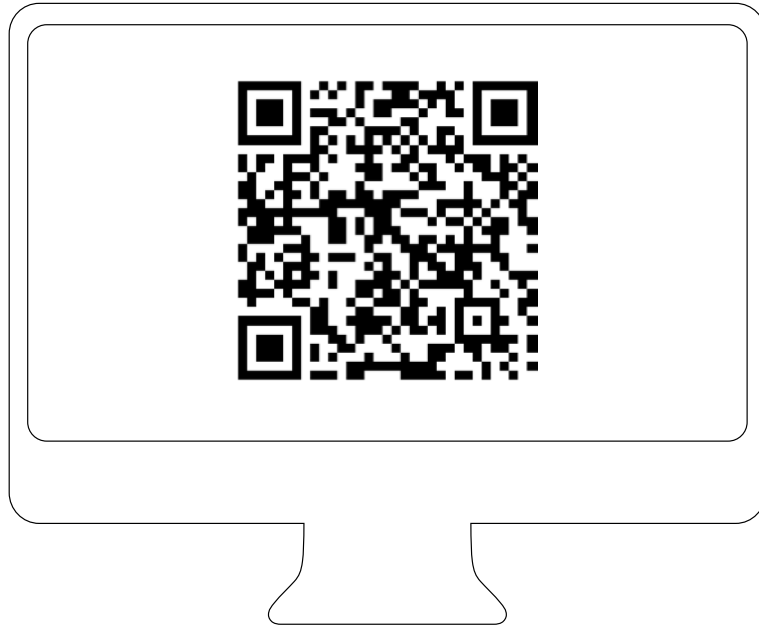
4 | Starting – Standby

Press the Standby button.



5 | Discovering – Website

To view the User Manual and other information about this product, visit our website: simaudio.com



M O O N

by SIMAUDIO