

that analogue thing  
SCHEU PREMIER



# SCHEU

The Scheu of Music



# SCHEU

The Scheu of Music

## Premier

The Premier is our most popular standard turntable and is available in a number of variants. It has been conceived as a heavyweight turntable distinguished by individual design details.

The legendary bearing developed by Thomas Scheu is an inverted precision platter bearing (the spindle is situated on the base while the bearing shell is inside the platter) made of 100Cr6 ball bearing steel with a contact surface hardness of 62 HRC and bearing tolerance range h6/H6, as used in our other turntables. The solid spindle screwed into the base plate has a ceramic ball on top of it. The low-resonance, heavy acrylic platter is effectively suspended on the bearing and therefore provides its own stabilisation. The DC motor in its own solid housing is separated from the platter and quickly runs up to the speed selected via the rocker switch (33 or 45 rpm).

Fine adjustment is handled by a potentiometer, while power is provided from a plug-in transformer. Connection between motor and platter is made by means of a 'string' composed

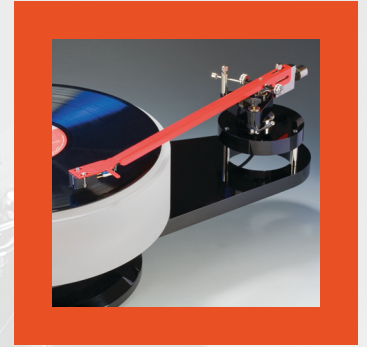
of ultra-fine nylon thread. The advantage of such a 'string' drive lies in the fact that the contacting surface transmitting the force is small. This means fluctuations in tension and unnecessary friction can be minimised. A cylindrical ring filled with resonance absorbing lead shot is located between the base plate, with its three height-adjustable threaded spikes, and the one or two-lobed tonearm base. Either 9" or 12" tonearms may be fitted. The Premier MKIII offers the capability of mounting two tonearms, which can even be of different lengths. There is also a choice of platter heights: 50 mm (weighing 4.5 kg) and 80 mm (7.5 kg).

## The Sound

The Premier will play in combination with any tonearm marketed in the world - easily, effortlessly and with great depth. Depending on the combination of system and tonearm, the tonal colour can be rich and the bass reproduction impressively deep. With our own tonearms, the sound reproduction is seamless, clear, perfectly ordered and elemental in its power.







## Finish & Versions

### Premier MK II

The Scheu Premier MK II is supplied with a tonearm base for either a 9-inch or a 12-inch tonearm. For the Premier MK II turntable, you can choose between two platter heights: 50mm and 80mm.

### Premier MK III

The Scheu Premier MK III is designed in the form of a double shell, where two tonearms can be combined on two bases in any number of ways. Both 9-inch and 12-inch arms can be combined any way you choose. The Premier MK III always comes with an 80mm platter.

### Chassis Colour

The chassis is available in transparent or black colour.

### Platter Colour

The platter comes in matt acrylic as standard. A polished platter is also available upon request, at extra cost.

### Motor Colour

The motor is made of solid aluminium and can optionally be black anodized or polished to a high gloss. As standard, dark turntables are supplied with a black motor and light /transparent turntables with a high-gloss motor.

## Specifications

### Weight:

Depending on the version 18 to 20 kg

### Dimensions:

ca. 550 x 450 mm (MKIII)

ca. 550 x 350 mm (MKII 12-inch)

ca. 450 x 350 mm (MKII 9-inch)

### Motor:

Electronically regulated DC-Motor for 33 and 45 rpm, stand-alone, massive metal housing

### Pulley:

For string drive, stainless steel

### Drive belt:

Nylon string

### Platter:

Acrylic, precision-turned with 1/100 mm tolerance, 50 mm height (4.7 kg) or 80 mm height (7.5 kg)

„Attractive to the eye and ear, the Scheu Premier II/Cantus was a joy to have in my home.“ (Online-Magazin 6moons - 7/2008)

The Scheu Premier was tested at 'The Absolute Sound' and was awarded with the 'Golden Ear Award 2001'!

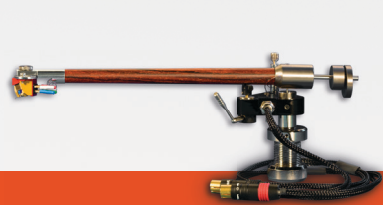
## Scheu Analog Turntables

Turntables from SCHEU are synonymous from Berlin to Ushuaia with a most audiophile sound quality, tonal balance and, last but not least, outstanding durability. They are all belt-/string-driven heavyweight turntables and they all use an inverted bearing.

Production quality is of the utmost importance to us, and we work exclusively with suppliers

from Germany. This means that our final products are 'Made in Germany' through and through - apart from the Rega arm on some models, which fortunately is being built to the same exacting standards.

Our turntables are carefully manufactured by hand and offer a suitable solution for everyone, no matter what your requirements, from the beginner's turntable Cello to the very sophisticated reference-beater Das Laufwerk No. 2.



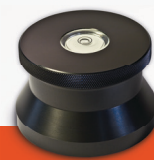
**Tonearms**



**Turntables**



**Cartridges**



**Accessories**

**Most analogue.**  
The secret, since 1987  
handmade in Germany.

[www.scheu-analogue.com](http://www.scheu-analogue.com)

 **scheuanalog**