



Q Active

Expect the Exceptional.

Versatile. Sound. Design.

An entire high-resolution wireless audio system, delivering uncompromised hi-fi sound that fits conveniently and seamlessly into your lifestyle.

Q Active.
Expect the Exceptional.



Since its founding in 2006, Q Acoustics has built an unrivalled reputation for designing, engineering and manufacturing innovative, high-performance, class-leading loudspeakers at every price. And with Q Active, Q Acoustics has taken its mastery of engineering, design and performance to a completely new place.

The brief for Q Active is simple, yet staggeringly ambitious: to create an exceptional high-resolution wireless audio system within a pair of compact, high performance speakers.

The speakers must eliminate the plentiful wiring of a traditional audio system, requiring only the connection of mains power. But they must also accommodate traditional physical audio formats as well as audio streaming services. Such as Bluetooth, Apple AirPlay 2, streaming service compatibility and network streaming too, Q Active must include sound from TVs, from turntables, from games consoles and from CD players as part of the system, wirelessly and in high resolution audio quality.

It sounds like it can't be done. But it can - all that's required is vision, determination, dedication and world-class engineering. With Q Active, Q Acoustics has redefined the 'music system' - and has brought your audio past and present into the future.





In delivering an entire high-resolution audio system, one that serves up uncompromised audio quality while fitting seamlessly and conveniently into its user's lifestyle, Q Acoustics has excelled in three key areas.

Q Active is versatile. Q Active delivers superlative sound quality. Q Active is designed to look as unique as it sounds.

And, of course, Q Active represents the sort of prodigious value for money every listener expects from Q Acoustics.

Introducing Q Active 200 and Q Active 400 from Q Acoustics.



Q Active 200

Standmount active speakers.
Also available in black. Stands sold separately.



Q Active 400*

Floorstanding active speakers.
Also available in black.

*Available 2021.

Versatile. Sound. Design.

Bring your audio past
and present into the future.



Wireless Connectivity

Each Q Active system includes connectivity for Bluetooth 4.1, Apple AirPlay 2, Spotify Connect and UPnP. Q Active is also Roon Ready. The hub comes in two variants, Google "Chromecast built-in" or Amazon "Works with Alexa" enabled†.

In addition, Q Active is designed to support your favourite streaming service's native app - which means simple, straightforward access to the entire planet's music. Q Active works with Amazon Music, Apple Music, Deezer, Qobuz, Spotify and Tidal.

HUB COMPATIBILITY:	Google Hub	Amazon Hub†
Amazon "Works with Alexa"	×	✓
Google "Chromecast built-in"	✓	×
Google Assistant	✓	×
Apple AirPlay 2	✓	✓
Spotify	✓	✓
Roon Ready	✓	✓
Bluetooth	✓	✓
UPnP	✓	✓

CHOICE OF HUB

Chromecast built-in OR WORKS WITH alexa †

STREAMING SERVICES

UPnP Bluetooth®

STREAMING APPS

† Available 2021.

Q Active Control Hub

As well as all these network audio and streaming service possibilities, Q Active also supports physical formats via its compact, hideaway control hub.

The hub is the heart of the Q Active system. It's where all your physical formats connect to the system, and it's where all of the incoming audio information is converted to a high-resolution 24bit/96kHz digital file. The hub then streams this high-resolution audio file to the speakers - so any format you want to listen to can be dealt with wirelessly by your Q Active system. Which means high-quality wireless audio performance no matter the source of your music.



ETHERNET

Ethernet connectivity provides the option for a robust wired internet connection to Q Active.



TV SOUND

HDMI Audio Return Channel (ARC) input on the hub - so any TV with a corresponding output can send audio information to the hub without affecting its picture performance. Want your TV sound to be part of your wireless audio system? With Q Active, it can be.



DIGITAL OPTICAL

Disc-players - no matter if it's a CD player, a DVD player or a Blu-ray player - will have a digital optical output. Almost every games console has one too. So there's nothing to stop you getting any of these sources involved in your wireless high-resolution audio system as well.



LINE LEVEL

Use the stereo RCA analogue inputs at line level and plug in a cassette deck, a mixer or anything else with an analogue line-level output into the hub. From there it is transferred wirelessly to the speakers, where it is delivered as great-sounding high-resolution audio by the Q Active speakers.



TURNTABLE

The stereo RCA analogue inputs on the hub can be selected for use with a moving-magnet phono stage. So plugging in your record player means all of that lush vinyl sound can be transformed into a digital signal and streamed wirelessly to the Q Active speakers.



SUB OUT

The Q Active system delivers plenty of deep, detailed bass. However the hub does offer a subwoofer pre-out for hooking up an additional stand-alone subwoofer.

Multiroom Audio Integration

As well as delivering exquisite high-resolution stereo sound in your main listening room, Q Active can also form part of a multiroom system.

Regardless of whether you choose Amazon "Works with Alexa" Multi-Room Music, Apple AirPlay 2, Google "Chromecast built-in" or Roon to organise your multiroom music system, Q Active can be seamlessly integrated into it. So no matter if you want the same song playing all over your home, or different music in different zones, or if you simply want your music to follow you as you move around your home, Q Active can be part of your experience.

A great-sounding, high-resolution part of it, no less.



Voice Control

If you have Google Home, Amazon Alexa or Apple Siri smart speakers on your home network, it's easy to control the volume and playback selection of the Q Active system. Simply choose which of the formats you prefer - the control hub is available in a choice of either 'Chromecast Built-In' or 'Works with Alexa' – both can be used with Apple Siri, and then use these mic-equipped smart devices on your network to control your Q Active system. You can also use the Google Home, Alexa app on your mobile to control the Q Active system.



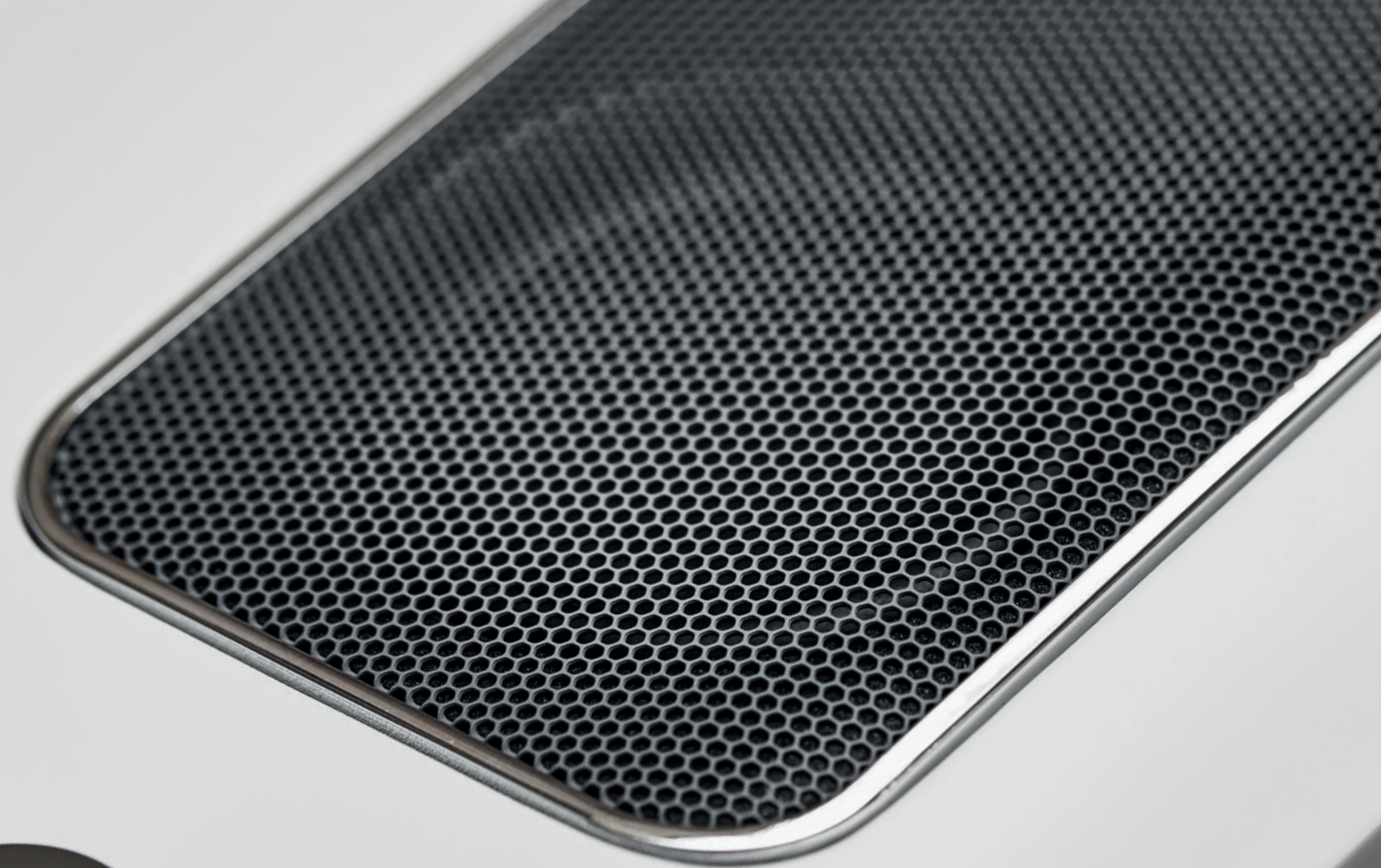
† Available 2021.

Your Choice Of Control

As well as your choice of Google "Chromecast built-in", Amazon "Works with Alexa" or Apple Siri voice control, Q Active can also be controlled using the app of your favourite streaming service. Or if the TV plugged into the HDMI ARC socket on the control hub is CEC-equipped, use the TV's remote to control functions like 'volume' and 'standby'. Alternatively use the cabinet mounted volume control features on each Q Active speaker.

Versatile. Sound. Design.

Ground-up, imaginative design delivers uncompromised high-resolution audio performance and exceptional value for money.



Stunning High Resolution Sound

Audio can be described as 'high resolution' if it consists of a digital audio format of greater than the CD-standard 16bit/44.1kHz. Q Active can support wireless streaming with a maximum source resolution of 32bit/192kHz, whether from its control hub via a smartphone or tablet.

This means any source plugged into the hub will be converted to an information-rich 24bit/96kHz digital format before it's streamed to the Q Active speakers, and the top tier of any high-resolution music streaming service will be streamed at this resolution too.

The result of all this painstaking and uncompromised engineering is extraordinary musical accuracy and amazing audio quality. Q Active delivers a sonic performance way beyond its price.



Active Amplification

In a traditional, passive audio system there is one amplifier. It drives two speakers, which will have a total of at least four drivers. In the Q Acoustics Q Active system, each driver - there are three in each Q Active 200 speaker and four in each Q Active 400 speaker - is controlled by its own individual, specifically selected amplifier.

Using a total of six (or eight) discrete amplifiers, with a total of 280 (or 440) watts of power to drive the Q Active system means each individual driver receives its own carefully regulated amplification. As a result, Q Acoustics is able to control each driver with far more accuracy and finesse than would otherwise be possible and this, in turn, means Q Active can deliver the widest, most rigorously focused and most convincing soundstage possible. Which, in short, means Q Active sounds bigger and more precise than you might think possible.

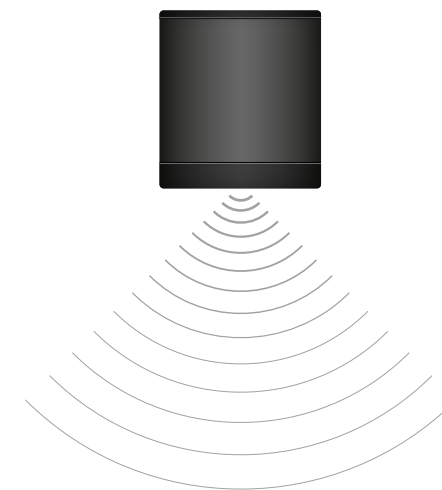
Hearing is believing.

Dynamic Widescreen Sound

Q Active doesn't look unique simply for the sake of it. Q Acoustics decided from the outset that it wanted Q Active to deliver a widescreen sound with no compromise in terms of stereo focus or soundstage, it specified Balanced Mode Radiators (BMRs) where less visionary companies might have stuck with the more conventional 'dome tweeter/midrange driver' alternative.

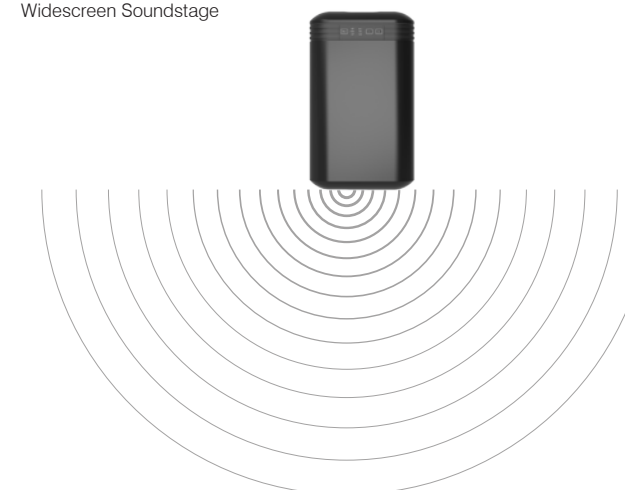
Balanced Mode Radiators allow Q Active to deliver outstanding sound quality across your entire listening area, rather than restricting it to the 'sweet spot' of more traditional driver arrangements.

STANDARD DRIVERS



BMR DRIVERS

Widescreen Soundstage



In addition to this widescreen presentation, BMRs deliver seamless midrange performance. Operating all the way down to 150Hz, where they hand over to Q Actives' subwoofer driver, there is no midrange crossover distortion and, consequently, completely clean and uncoloured midrange performance.

It allows for a degree of fine-tuning in your listening room as it's possible to position the BMRs to the inside or the outside of the cabinets. The cabinets may also be more effectively braced for optimum rigidity.

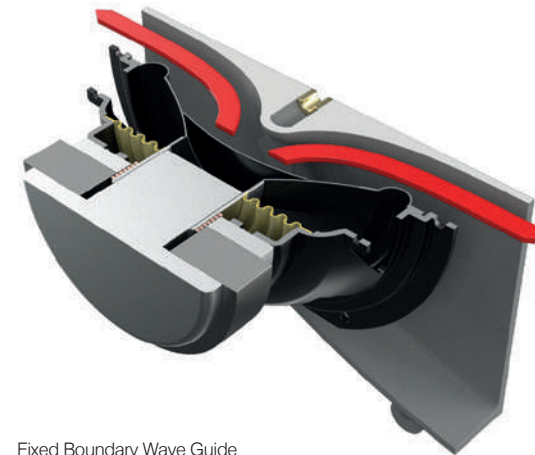
Powerful, Controlled Bass

The back of an ordinary loudspeaker isn't usually worthy of discussion. But, as is surely obvious by now, Q Active is far from an ordinary loudspeaker - and that goes for the rear of its cabinet too.

Q Active 200 features rear-firing 114mm/4.5in subwoofer drivers delivering fast, deep and beautifully organised bass. Q Active 400 features a pair of subwoofer drivers in order to double down on the low-frequency action. The reason these drivers are concealed, and the reason they're arranged in the way they are, is all to do with Q Acoustics' determination to make Q Active easy to position and simple to live with, as well as helping the system sound brilliantly punchy and controlled.

Because the subwoofers fire onto a fixed boundary (the inside of the rear panel), the bass response of Q Active is always ideal, always perfect - no matter where in your room you decide to position the speaker. There's a carefully designed wave guide boundary for the subwoofer to fire onto, too, which means the dispersal characteristics of the bass frequencies are always exactly as Q Acoustics prefers.

These two design elements mean that, even in positions where conventional loudspeakers would sound hopelessly compromised, Q Active is always performing exactly as its designers intended.



Fixed Boundary Wave Guide



Versatile. Sound. Design.

A complete high-resolution audio system that looks as unique as it sounds.



Stunning Ground-Up Design

Rather than attempt to fit one of its existing loudspeaker designs with electronics, Q Acoustics has designed Q Active from the ground up with the express intent of delivering an utterly uncompromised high-resolution audio system that looks as good as it sounds.

Creating an active high-resolution audio system from scratch has allowed Q Acoustics to incorporate every possible audio source into the compact, bespoke control hub and give Q Active all the flexibility, in terms of wireless audio sources, it needs. It means a complete lack of compromise where acoustic engineering, as well as industrial design, is concerned. And, ultimately, it means Q Acoustics has been able to package an entire high-resolution audio system into two good-looking and beautifully built speakers that sound just as striking as they appear.



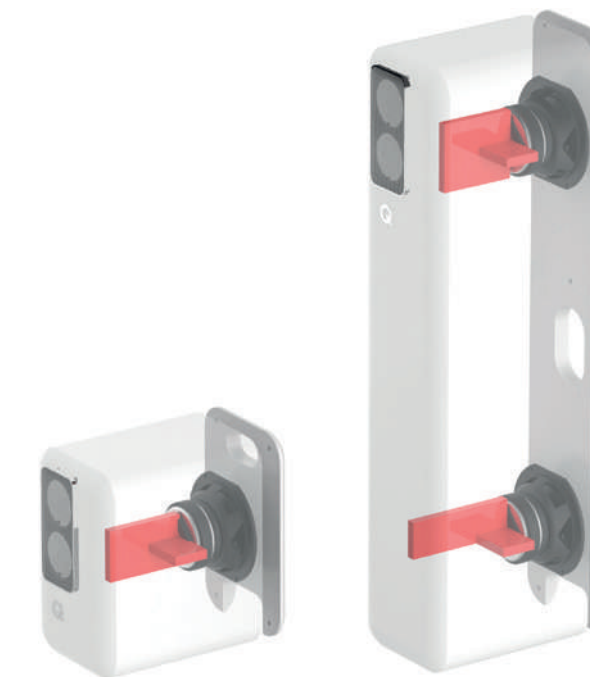
Unrivalled Acoustic Engineering

Meticulous attention to detail has produced a compact, high-performance system that makes a distinctive visual statement - but every element of Q Active has been engineered to deliver the best performance possible.

As well as the panoramic, widescreen sound delivered by the BMR arrangement and the deep, controlled bass served up by the carefully specified and positioned subwoofers, Q Acoustics has paid painstaking attention to the way the Q Active cabinet contributes to the system's outstanding sonic performance.

Balance and Rigidity

'Dart' bracing in both the Q Active 200 and Q Active 400 cabinets provides essential stiffness to the cabinet and equally helpful mechanical stability to the rear-firing driver unit - both are extremely good news when it comes to extracting optimal performance from the speaker. And in Q Active 400, careful positioning of the two subwoofers means standing waves inside the cabinet that might colour the sound are effectively neutralised.





Tuned For Your Listening Environment

Unlike most loudspeakers, Q Active is tuned to perform to its maximum potential no matter where in your listening room it's positioned. And unlike most loudspeakers, Q Active is remarkably forgiving of less-than-ideal placement. Its driver configuration means it's one of the most flexible, as well as one of the best-sounding, speakers you can buy at any price.



Speaker Arrangement

There's a switch on the back of each Q Active speaker to designate it as either the left or the right channel. This means that the offset BMRs can be positioned at the inside or the outside of the cabinets, allowing perfect audio reproduction no matter if you're sitting close to the speakers or far away from them.



DRIVERS INSIDE

DRIVERS OUTSIDE

Boundary Setting

A second switch allows you to tell the speaker exactly where it's positioned in relation to the room close to a rear wall, in a corner, or out in a little free space. This information allows Q Active to fine tune its low frequency response in order to deliver the best possible sound no matter the circumstances.

Two Stunning Finishes

Both Q Active 200 and Q Active 400 are available in a choice of finishes - matte white or matte black. Both finishes are flawlessly applied, both are gently reflective of ambient light, and both will enhance the interior decor vocabulary of any home.

Q Active 200



Matte black

Matte white

Q Active 400*



Matte black

Matte white

*Available 2021.

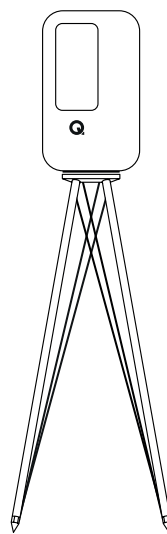
Tensegrity Stands

Q Active 200 can be specified with a bespoke stand. Inspired by the ground-breaking Tensegrity stand developed by Q Acoustics for its high-end Concept 300 loudspeaker, the Q Active 200 stand minimises resonance from the floor to the speaker cabinet (and vice-versa) thanks to its remarkable low-mass, low-reflectivity design. And in addition to its acoustic benefits, the stand's minimal design is the perfect visual complement to Q Active 200's unique looks.

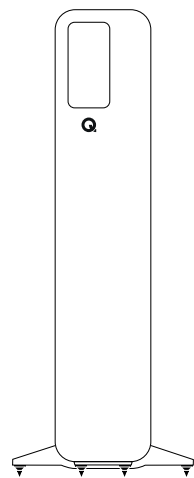


Google and Chromecast built-in are trademarks of Google LLC.
Amazon, Alexa and all related logos are trademarks of Amazon.com, Inc. or its affiliates.
Apple, AirPlay, are trademarks of Apple Inc., registered in the U.S. and other countries.
The Bluetooth® word mark and logo are registered trademarks owned by Bluetooth SIG, Inc. and use of such marks by Armour Home Electronics Limited is under license.
The term HDMI and HDMI High-Definition Multimedia Interface, and the HDMI Logo are trademarks or registered trademarks of HDMI Licensing LLC in the United States and other countries.

Specifications



Q Active 200 (Stands Sold Separately)



Q Active 400*

Acoustics	Enclosure type	Reflex (ported)	Reflex (ported)
	Full range driver	2 x BMR 58mm (2.25in)	2 x BMR 58mm (2.25in)
	Subwoofer (high excursion)	1 x 114mm (4.5in)	2 x 114mm (4.5in)
	Crossover frequency	150Hz	TBC
	System frequency response (free boundary)	46Hz to 20kHz (-6dB)	TBC
Power (per speaker)	Continuous power	100W	TBC
	Peak power	280W	TBC
Power requirement	Voltage range	100 - 240 VAC, 50/60 Hz	100 - 240 VAC, 50/60 Hz
Weight and dimensions	Dimensions (per speaker) H x W x D	284 x 170 x 290mm (11.2 x 6.7 x 11.4in)	825 x 320 x 290mm (32.5 x 12.6 x 11.4in) incl. spikes & stabiliser
	Dimensions on stand H x W x D	922 x 286 x 338mm (36.3 x 11.3 x 13.3in)	-
Wireless connectivity	Bluetooth	v4.1 Low Energy	17.5kg
	Hi-Res Wireless Link frequency	5.8GHz	5.8GHz
Audio playback	Sample frequency	96kHz	96kHz
	Bit depth	24bits	24bits
	Max Source Resolution	32bit/192kHz	32bit/192kHz

*Available 2021.





#hearingisbelieving



qacoustics.co.uk